



# zetronic group

**WE DRIVE YOUR EXPECTATIONS**



## zetronic group

**WE PROVIDE INDUSTRIAL DESIGN AND MANUFACTURING SERVICES**

- Over 61,000 square meters of facilities
- Over 400 employees
- Over €75M in revenue

**zetronic**

**MECHATRONIC TECHNOLOGIES AND COMPONENTS FOR AUTOMOTIVE AND INDUSTRY**

- Since 1921
- Over 120 operators



**ELECTRONIC DESIGN & MANUFACTURING SERVICES**

- Since 1986
- Over 40 operators



**ELECTRONIC DESIGN & MANUFACTURING SERVICES**

- Since 1982
- Over 50 operators



**ADVANCED MANUFACTURING AND LABOR-INTENSIVE**

- Since 2023
- Over 80 operators



→ CABINS FOR AGRICULTURE AND INDUSTRY



→ ELECTRIC MOBILITY



→ SOLUTIONS FOR VEHICLE SHARING

- Since 1970
- Total over 115 operators

## SECTORS & SPECIALISATION

### AUTOMOTIVE

PRODUCTS AND SOLUTIONS ON-ROAD & OFF-HIGHWAY



**50%**  
OF REVENUE

### INDUSTRIAL AUTOMATION



**10%**  
OF REVENUE

### METERING & HVAC



**15%**  
OF REVENUE

### SMALL & LARGE APPLIANCES



**10%**  
OF REVENUE

### ENERGY & HOME AUTOMATION



**15%**  
OF REVENUE

## MARKETS

## zetronic group

**Zetronic Group adapts to customer needs, prioritizing quality, efficiency, and optimization:** from certified product and line design to automated mass production, from the development of electronic solutions to advanced assembly activities.



INNOVATION



TECHNOLOGY



ANALYTICS



EFFICIENCY



PADOVA - 18.000 SQM - MECHATRONICS



PORTOGRUARO (VE) - 25.000 MQ - OFF-HIGHWAY & e-MOBILITY



DIGITAL  
TRANSFORMATION



PRODUCTIVITY



DIGITAL OPERATION



INTEGRATION



CHIARANO (TV) - 2.000 MQ - ELECTRONICS



OZZANO DELL'EMILIA (BO) - 4.000 MQ - ELECTRONICS



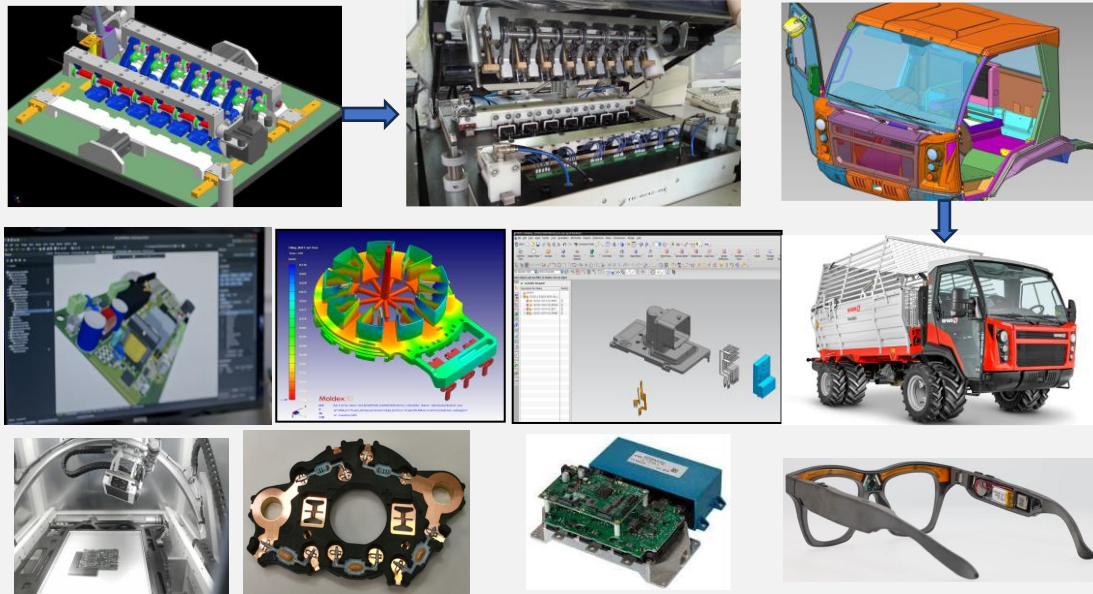
LONGARONE (BL) - 12.000 MQ - LABOUR INTENSIVE



# FROM DESIGN TO FINISHED PRODUCT

Our approach is **CUSTOMER-CENTRIC**, providing a complete service **from design to mass production**.

**We transform needs into concrete solutions:** Thanks to our multidisciplinary team, we combine **engineering creativity, advanced design expertise**, and a **strong focus on customization** to **create, develop, and produce** unique components, systems, and lines built around the customer and their specific requirements.



THE CUSTOMERS, THEIR REQUESTS, OUR SOLUTIONS

## R&D AND DESIGN TEAM



**28** mechanical and plastics designers



**25** electronic designers



**6** process engineers

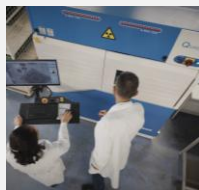


## zetronic group

OUR FACILITIES AND OUR OPERATIONS ARE AT THE FOREFRONT

### ELECTRONIC BOARD PRODUCTION

- IQC Procedures (Incoming Quality Control)
- Traceability system by lot, serial number, and on-demand End-to-End
- 6 SMT lines with capacity up to 200,000 CPH, 008004 placement (0.1–0.2 mm)
- Over 100 operators for PTH assembly and 2 automated PTH assembly lines
- IPC-A-610 quality standards: AOI inspections, X-ray, ECM and ICT testing (SPEA 3030, 4020 lines)
- Automated vertical storage systems



### 25 PLASTIC INJECTION MOLDING

- Vertical and Horizontal Presses
- Capacity from 35t to 350t
- Insert molding
- Automatic packaging
- In-line dimensional optical control with cameras up to 100% of components



### 9 PRESSES METAL STAMPING

- Capacity from 25t to 100t
- Automatic unwinding
- Copper alloy processing
- In-line inspection with camera up to 100% of components



## zetronic group

OUR FACILITIES AND OUR OPERATIONS ARE AT THE FOREFRONT

### GALVANIC & COATING LINES

#### 2 GALVANIC LINES:

- Nickel, Silver, Tin, Nickel- Phosphorus, Palladium-Nickel
- Reel-to-reel plating lines
- Tin reflow
- Full or selective coating
  - In-line inspection

#### 2 COATING LINES:

- Rack loader recirculation oven, enabling higher throughput than conventional linear ovens
- Coating machine with paint blade technology, ensuring a continuous, bubble-free film



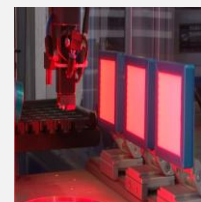
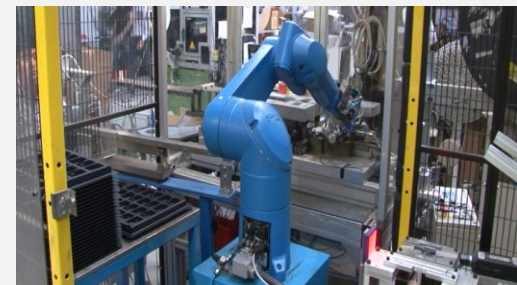
### MOLDS & MECHATRONIC RAPID PROTOTYPING

- Punching, Molds, and Inserts
- EDM Machines, Milling Machines, and Grinding Machines
- Ultrasonic Cleaning
- Grinding Machines and Laser Welding
- Electronic Board Prototype Services
- 4-6 Weeks for Prototype, Prototype Testing with ICT Flying SPEA



### ASSEMBLY & AUTOMATED LINES

- Prototypical Automatic and Semi-Automatic Lines Developed by Zetronic Engineering
- Automatic pin insertion
- 100% camera inspection
- Robotic application
- Ultrasonic Welding
- SMT process capability





# QUALITY TECHNOLOGIES, BY HISTORY AND VOCATION

We provide **total quality solutions**, working through every phase — from design to the final product — with constant commitment to **excellence, adherence to international standards**, and adaptation to the **specific needs of our customers**.

## RELIABILITY LABORATORIES: electrical, environmental, mechanical tests



**EMC Pre-Compliance and ICT Testing:** EMC pre-compliance testing is performed in-house, subsequently interfacing with external laboratories to obtain the required certification. The group is equipped with lines featuring SPEA ICT machines for the automotive and medical sectors.

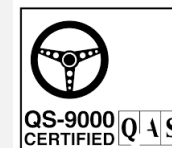


## CERTIFIED PROCESSES: from the mechatronic component to the fully assembled vehicle on the production



THE CUSTOMER, THEIR REQUESTS, OUR SOLUTIONS

## FINAL GOAL: ZERO DEFECTS



**zetronic**



***IATF-certified Tier 1 / Tier 2  
automotive suppliers for integrated  
mechatronic components.***



Zetronic Group uses exclusively electricity from renewable sources. The Padua plant is powered by a 700 kWp photovoltaic system and by the purchase of certified green energy.

## zetronic group

**To consolidate our long-standing production in **key markets** and **key sectors** (mechanics, electronics, plastics), becoming the reference partner for major international groups by offering solutions through **a complete supply chain supporting industrial players.****

We aim to grow while maintaining a focus on industrialization and research & development (R&D), simultaneously integrating the services offered by the other companies in the group.

### Services offered

- Design
- Industrialization
- Production
- After-sales

### Operational approach

- OEM (Original Equipment Manufacturer)
- ODM (Original Design Manufacturer)
- CM (Contract Manufacturer)

### KEYWORDS



Human capital, organization, trust, safety



Intellectual capital and technologies



Control and planning



Direct relationship with the client, in line with their needs



Control and management of financial and physical capital



Green-oriented approach

OUR AIM  
IS TO ASSIST  
CUSTOMERS  
IN GROWING  
AND  
EXPANDING  
THEIR BUSINESS  
ON A GLOBAL  
SCALE



**AUTOMOTIVE**  
PRODUCTS AND SOLUTIONS  
ON-ROAD & OFF-HIGHWAY



**INDUSTRIAL  
AUTOMATION**



**METERING &  
HVAC**



**SMALL & LARGE  
APPLIANCES**



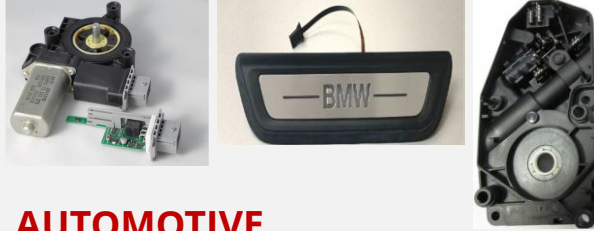
**ENERGY & HOME  
AUTOMATION**



# APPLICATION SECTORS AND PRODUCT EXAMPLES



**AUTOMOTIVE**



**AUTOMOTIVE**



**HI-TECH WEARABLES**



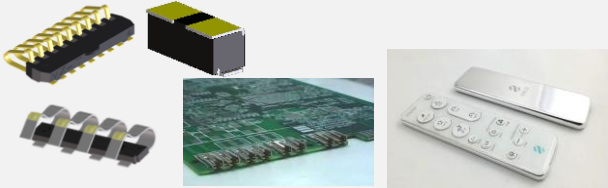
**HVAC/R & NAVAL**



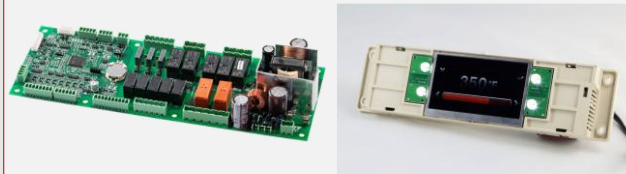
**WIRELESS COMMUNICATION & IoT**



**INDUSTRIAL AUTOMATION**



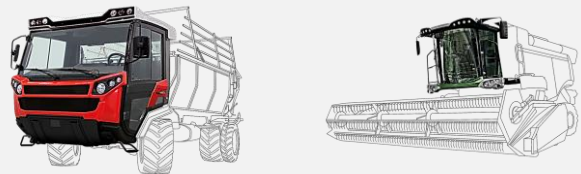
**CONSUMER & TELECOM**



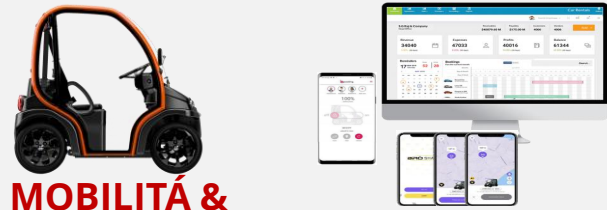
**HO.RE.CA. & FOOD**



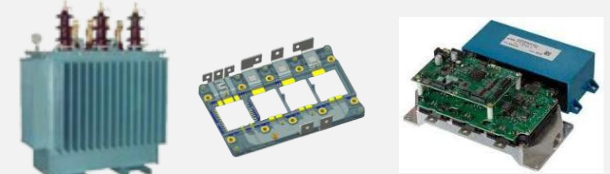
**METERING**



**OFF-HIGHWAY**



**MOBILITÀ & VEICOLE SHARING MANAGEMENT**



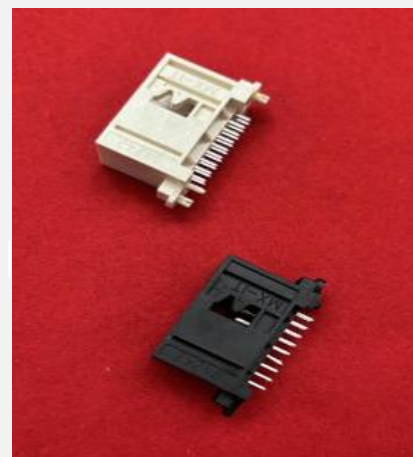
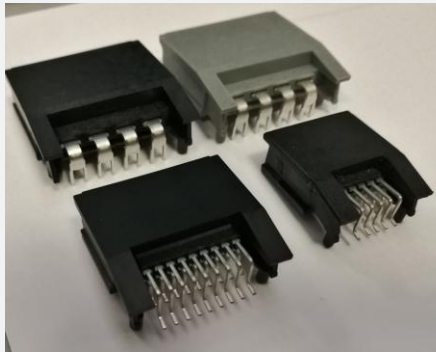
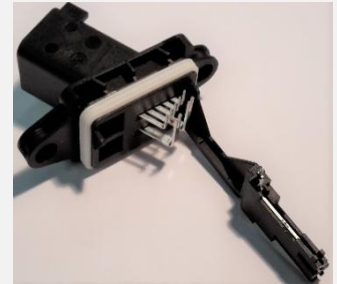
**BMS & ENERGY MANAGEMENT**

- Power modules
- Overmoulded lead frames
- Ultrasonically soldered USB-A connectors
- Battery connectors
- Vertical or 90° bent connectors (Headers)
- Female terminal connectors (Receptacles)
- Crimp eyelet terminals
- Thru-hole, pin-in-paste, SMT, PCB solder terminations
- Press-Fit terminations for PCB mounting



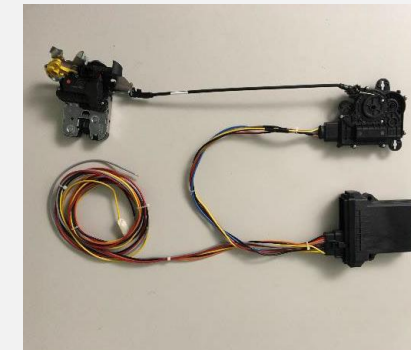
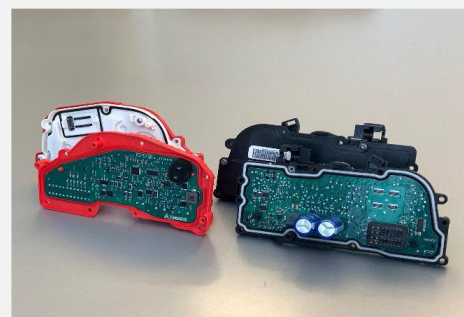
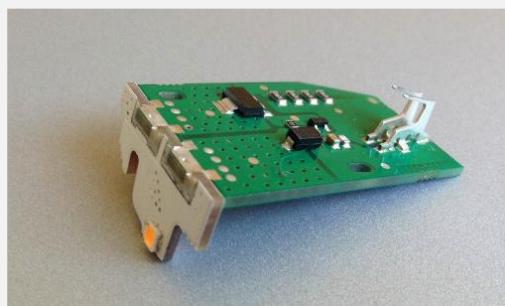


- Inverters for hybrid or electric vehicles
- Engine control unit
- Electric power steering
- Exhaust gas recirculation valve
- Gesture control
- Clutch actuator
- Window lifters
- Pressure sensors
- Tyre pressure monitoring
- Seat belt pre-tensioner
- Instrument control panel
- Vehicle control unit
- MOX, RAST, USB, MQS industry standards

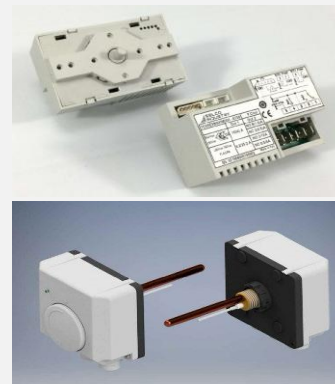
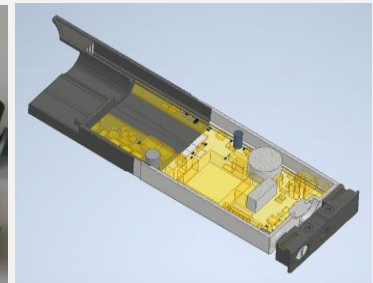
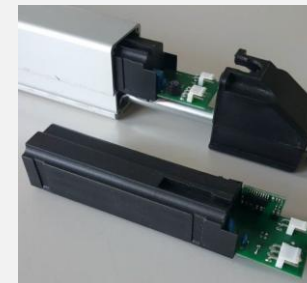
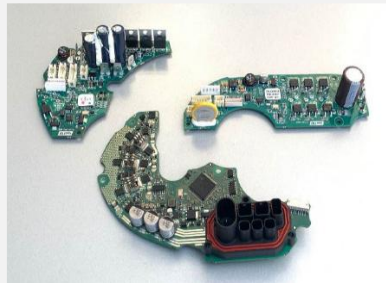
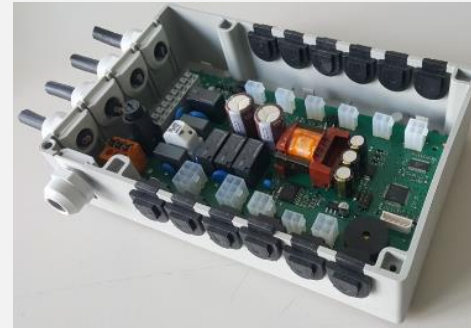




- Automotive Window Lifter Antipinch ECU
- Door Latches ECUs
- Small Lighting electronics PCBA
- ECU for Motorized Charging port module
- Hot Bar Soldering of FPCB-to-PCBA connections in lighting module
- Condensing Boiler, Brushless Motor Controls ECU
- RF Rechargeable Remote Controls
- Washing - Dishwashing - Dryer Cluster ECU



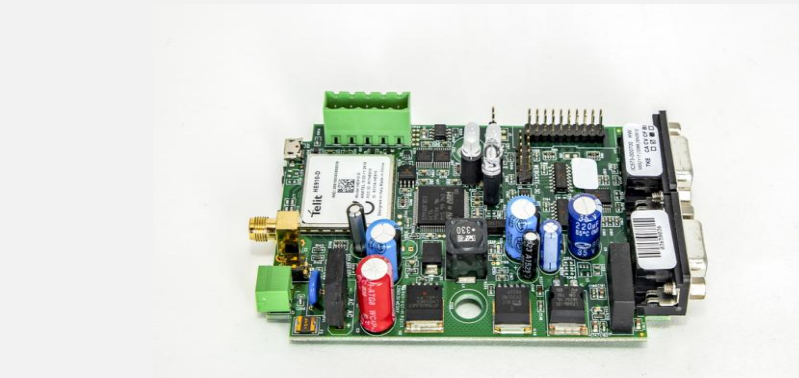
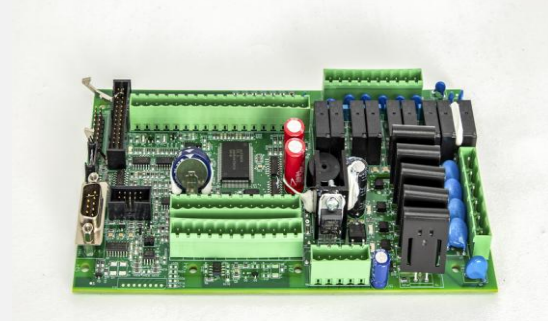
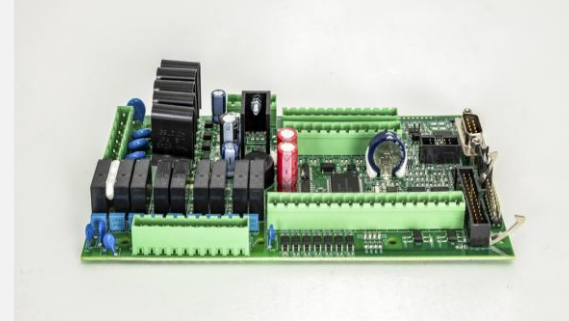
- Cooking, Oven controls
- Control unit for HIU (Flameless Boilers)
- eBike ECUs
- Motor Control ECU for Home Automation Actuators
- Thermoregulation
- Power modules
- Instruments development for Electric Magnitude Analysis, Electric measure, Reactive Power Controls





## ELECTRONIC BOARDS

The electronic boards we produce are used in complete products, developed through engineering/co-engineering or manufactured according to customer specifications





- Touch interfaces
- Interactive panels
- Display interface
- Basic control units
- Relay expansions
- Three-phase controllers
- Radio controls
- CT interfaces
- Parametric control units
- Sensors
- Thermostats
- Z-WAVE modules
- Dataloggers



## LABOUR INTENSIVE FOR ZETRONIC GROUP AND EXTERNAL PARTNERS

Labour-intensive production service for the companies in the group and external companies. Each production department is organized ad hoc according to the product and service. 100 qualified operators for the labour-intensive production of electronic, mechanical and mechatronic parts and components.

The production lines operating in 2025 are:

- Certified department for PTH production, wave soldering, electronic board testing
- Mechanical cabin pre-assembly department
- Certified electric quadricycle assembly and testing department
- Electromechanical panel assembly department
- Low, medium and high voltage transformer assembly department



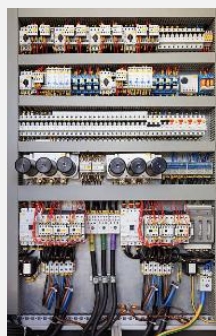


## PRODUCTION OF LOW/MEDIUM/HIGH VOLTAGE TRANSFORMERS & ELECTROMECHANICAL CABINET

**ZENNAROTRAFO**, a company partly owned by **INNOVATEK SRL**, has been active for nearly 80 years and is a leader in the electrical transformer sector, offering various capacities and technologies.

Through its own facilities, it is a certified partner of companies and public utilities in about 50 countries, pursuing a strong expansion strategy driven directly by its client-partners.

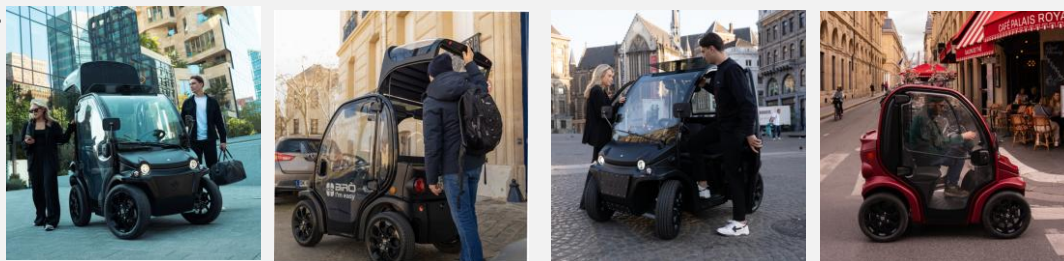
Thanks to synergies with **INNOVATEK**, it is strategic for **ZENNAROTRAFO** to open a new location to support its expansion and to enter additional manufacturing and technological fields, such as the low and medium power switchgear sector.





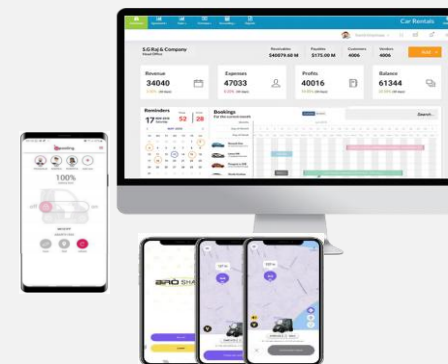
**BIRO** is the smallest four-wheeled electric vehicle designed for urban mobility.

The experience we have gained in the sector allows us to offer customers **customized design and manufacturing services for electric vehicles**, with innovative solutions for urban logistics and shared mobility, always driven by innovation and sustainability.



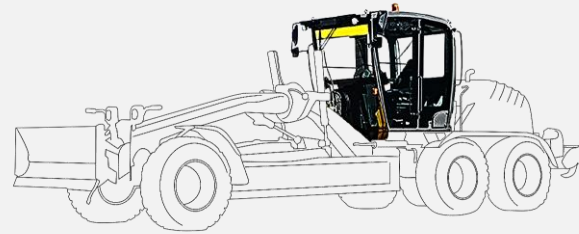
**SHARBIE** is the software house controlled by Estrima, developer of products for Vehicle Sharing management, such as:

- **BIRO SHARE** for intelligent Vehicle Sharing management
- **autonostop** It is the integrated system for managing and offering rental, demo, or courtesy cars. ➡ New project **tutelanostop**



**BIRO** SHARE

<https://biroshare.com/>



# zetronic group

## **zetronic group**

Zona Industriale Nona Strada, 29, 35129 Padova PD

VAT N. 00801060286

TEL. +39 049 791 2200

EMAIL: [info@zetronic.it](mailto:info@zetronic.it)

**[www.zetronic.it](http://www.zetronic.it)**

---

**[www.estrima.com](http://www.estrima.com)**

**[www.biroitaly.com](http://www.biroitaly.com)**

**[www.briedacabs.com](http://www.briedacabs.com)**

**[www.decelettronica.com](http://www.decelettronica.com)**

**[www.selcoindustry.com](http://www.selcoindustry.com)**