



zetronic group

WE DRIVE YOUR EXPECTATIONS

zetronic group

- Italian supply chain, since 1921
- Over 400 employees
- Over €75M in revenue
- 5 plants covering over 51,000 sq m

Keyword: **QUALITY**
Goal: **ZERO DEFECTS**
Approach: **GREEN-ORIENTED**



Zetronic Group is an Italian industrial company operating in the **MECHATRONICS** sector that develops, designs, and manufactures **SMART IOT** components and products, integrating multidisciplinary expertise in the mechanical, plastics, electronics, and software fields.

We operate globally as a **TIER1** and **TIER2** supplier in the Automotive sector – **HISTORICALLY** and as a supplier of products and complete solutions across various industries:

SECTORS

AUTOMOTIVE
PRODUCTS AND SOLUTIONS
ON-ROAD & OFF-HIGHWAY



50%



**INDUSTRIAL
AUTOMATION**

10%



**METERING &
HVAC**

15%



**SMALL & LARGE
APPLIANCES**

10%



**ENERGY & HOME
AUTOMATION**

15%



SMART IOT



molex

ABOUT US

HISTORY

1921: Zedapa is founded in the footwear industry

1950: Entry into the Automotive sector (FIAT)

1978: Zedapa becomes Zetronic: lighting, home appliances, automotive

1978: Brieda is founded, Off-Highway cab market

1982: Valossa is founded

1986: Molex begins the acquisition of Zetronic

1986: DEC Elettronica is founded

1990: Zetronic covers 10% of the telecommunications connector market

2007: Zetronic specializes in mechatronics for automotive

2008: Estrima is founded and acquires Brieda

2018: Sharbie is founded

2023: Innovatek is founded

Zetronic Group's headquarters are in **Padua**; the group's companies are located within a **radius of about 100 km**, promoting sector **complementarity**, logistics **efficiency**, and an integrated, **fully Italian production supply chain**.



MECHATRONIC TECHNOLOGIES AND COMPONENTS FOR AUTOMOTIVE AND INDUSTRY

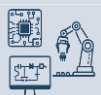
- Since 1921
- Over 120 operators



COMPLETE CABINS FOR OFF-HIGHWAY AND ELECTRIC VEHICLES

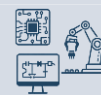
- Since 1978
- Over 100 operators

BORSA ITALIANA
proudly listed in the Euronext
Growth Milan - Ticker: ZED



ELECTRONIC DESIGN & MANUFACTURING SERVICES

- Since 1982
- Over 50 operators



ELECTRONIC DESIGN & MANUFACTURING SERVICES

- Since 1986
- Over 40 operators



ADVANCED MANUFACTURING AND LABOR-INTENSIVE

- Since 2023
- Over 100 operators

KEY FACTS

Zetronic Group invests in continuous upgrading and ongoing training to enhance employees' skills, as well as in the evolution and strengthening of its production lines.

SPACES AND SUSTAINABILITY



Over **51,000** square meters of facilities



Strategic location of the group's companies: within a maximum distance of **100 km**



700 kWp
PHOTOVOLTAIC SYSTEM
(self-consumption)



Over **180 tons/year** of scrap material sent for recovery and converted into secondary raw materials

PEOPLE AND SKILLS



Over **400** employees



20 mechanical and plastics designers



15 electronic designers

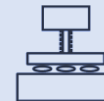


6 process engineers

PRODUCTION LINES AND EQUIPMENT



ELECTRONIC BOARD PRODUCTION
6 SMT lines, 2 automatic PTH assembly lines, automated vertical storage



PLASTIC AND METAL MOLDING
28 plastic molding presses (50–350t)
9 metal stamping presses (25–100t)



ELECTROPLATING AND COATING
2 electroplating lines, reel-to-reel plating
2 coating lines (blade coating)



PLASTIC METALLIZATION
2 polymer metallization lines for lighting and aesthetic applications

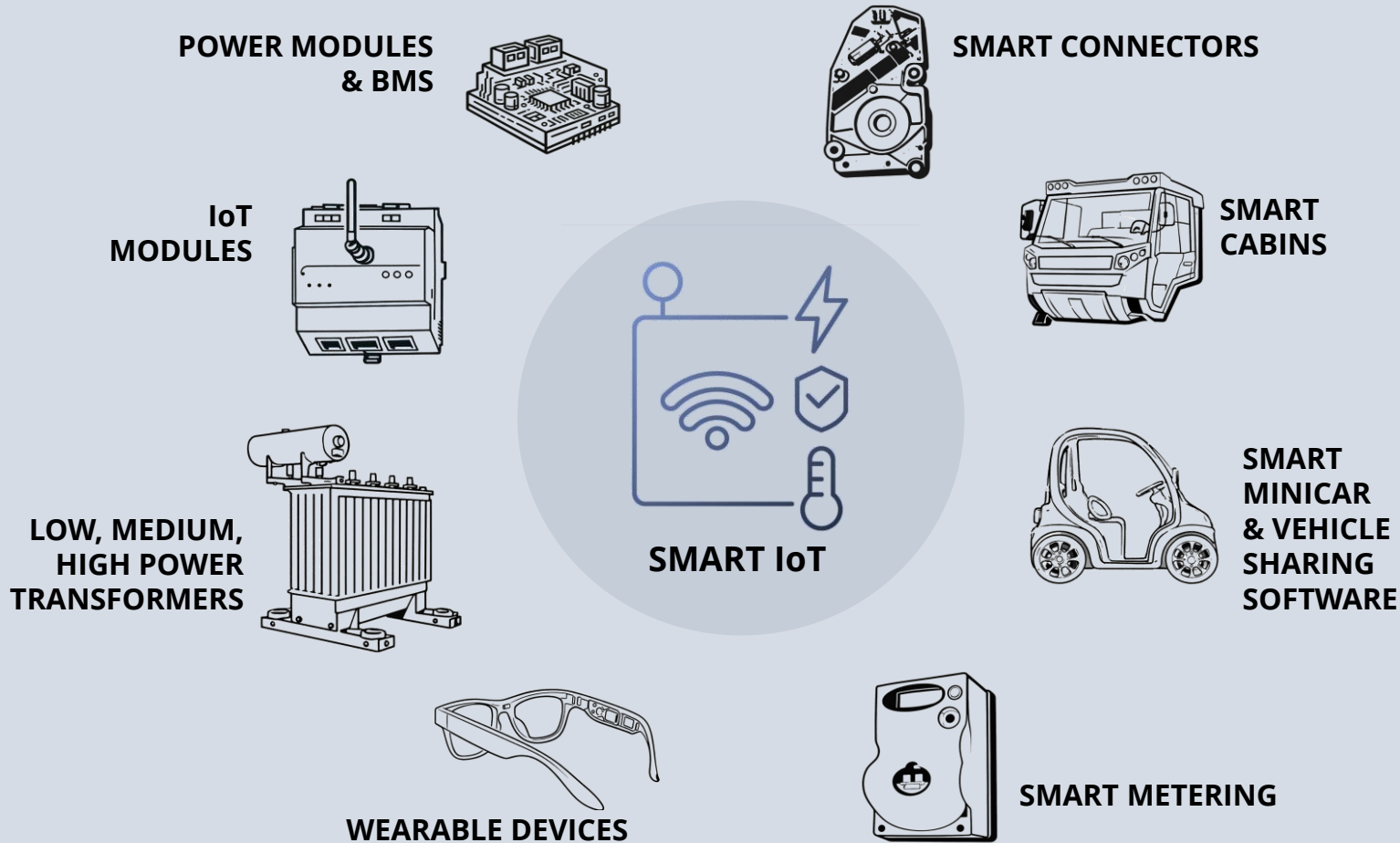


AUTOMATED LINES
20 automatic and semi-automatic lines, with 100% automated inspection



WHAT WE DO

Thanks to the synergies among the group's companies, **Zetronic Group** develops **SMART IoT** solutions and products that can communicate and adapt to the specific needs of **B2B, Tier 1, and Tier 2** customers.



zetronic group

OPERATIONAL APPROACH

- **OEM** (Original Equipment Manufacturer)
- **ODM** (Original Design Manufacturer)
- **CM** (Contract Manufacturer)

SERVICES OFFERED

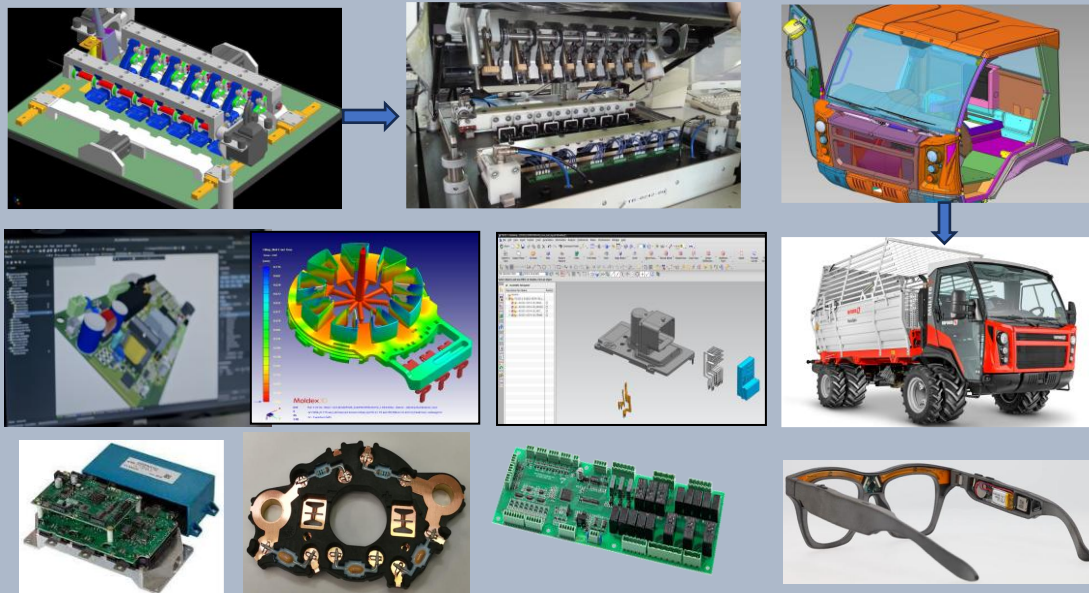
- Design
- Industrialization
- Production
- After-sales

and much more...

FROM DESIGN TO FINISHED PRODUCT

Our approach is **CUSTOMER-CENTRIC**, providing a complete service **from design to mass production**.

We transform needs into concrete solutions: Thanks to our multidisciplinary team, we combine **engineering creativity**, **advanced design expertise**, and a **strong focus on customization** to **create, develop, and produce** unique components, systems, and lines built around the customer and their specific requirements.



R&D AND DESIGN TEAM



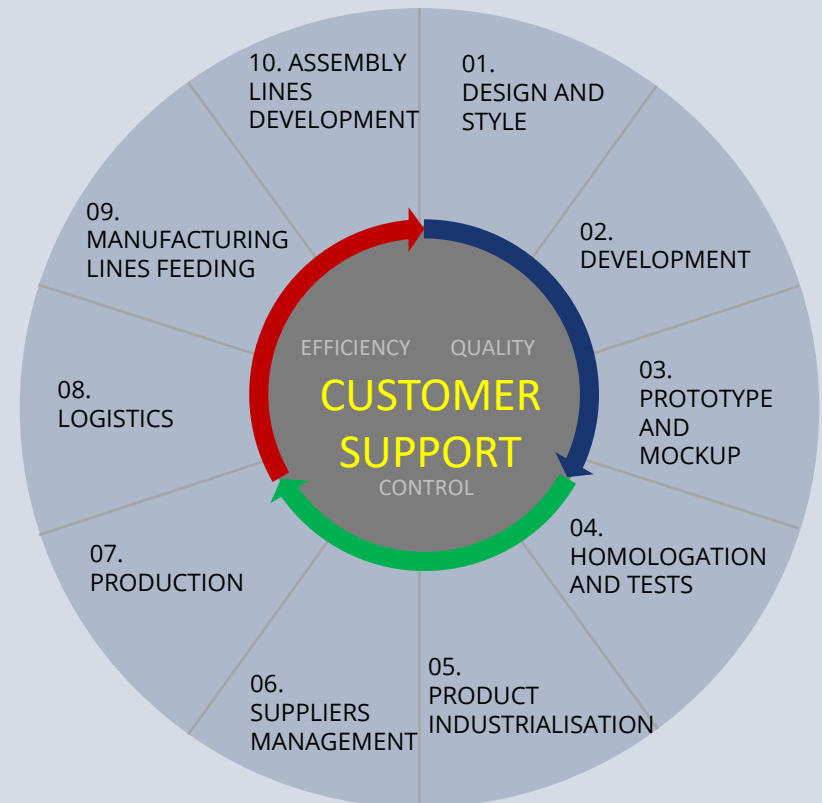
20 mechanical and plastics designers



15 electronic designers



6 process engineers



QUALITY FIRST

We provide **total quality solutions**, managing every phase—from design to the finished product—with a constant commitment to excellence, compliance with **international standards**, and **adaptation to the specific needs of our customers**.

FINAL GOAL: ZERO DEFECTS

**THE CUSTOMER,
THEIR REQUIREMENTS,
OUR SOLUTIONS**

CERTIFICATIONS



IATF 16949:2016



ISO 9001:2015



ISO 14001:2015



ISO 45001:2018



WE ARE GREEN-ORIENTED



Zetronic Group uses exclusively electricity from renewable sources.

The Padua plant is powered through a 700 kWp photovoltaic system and the purchase of green energy.

OUR QUALITY LABS & APPROACH

Our approach to quality combines technical expertise, certified processes, and dedicated testing. Our in-house laboratories perform electrical, environmental, and mechanical tests, including EMC pre-compliance and ICT testing, to ensure compliance with standards and consistency from component to finished product.



APPLICATION SECTORS AND PRODUCT EXAMPLES



AUTOMOTIVE



AUTOMOTIVE



HI-TECH WEARABLES



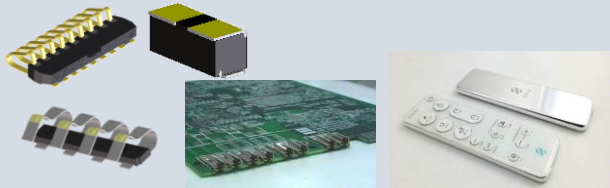
HVAC/R & NAVAL



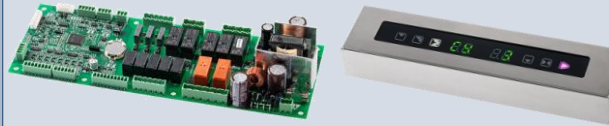
WIRELESS COMMUNICATION & IoT



INDUSTRIAL AUTOMATION



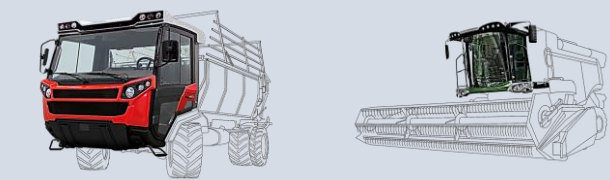
CONSUMER & TELECOM



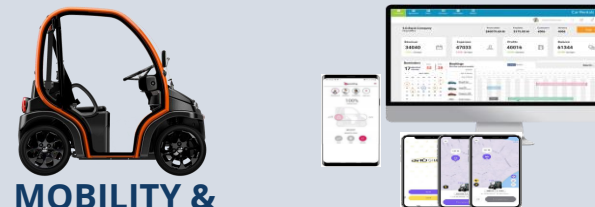
HO.RE.CA., FOOD & MEDICAL



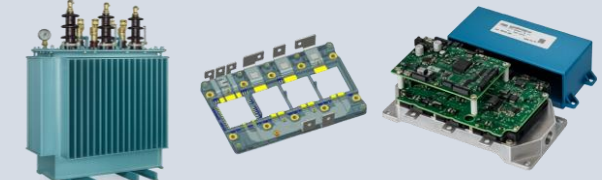
METERING



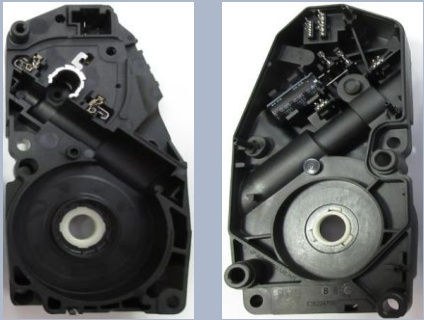
OFF-HIGHWAY



MOBILITY & VEHICLE SHARING MGMT



ENERGY MANAGEMENT



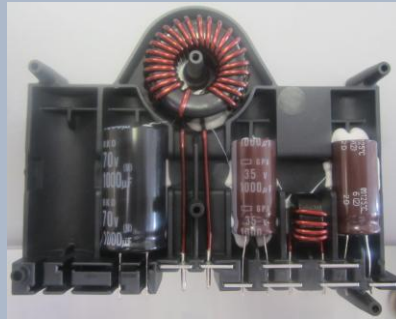
PRETENSIONER (AUTOMOTIVE)



**COMBUSTION CHAMBER
TEMPERATURE SENSING
CONNECTOR**



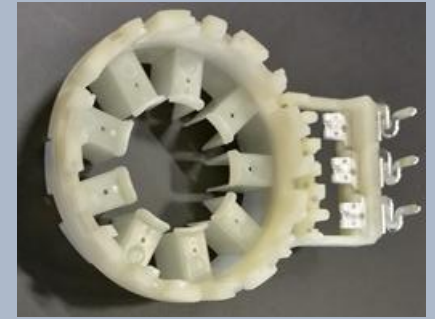
CONNECTORS AND POWER WINDOW MODULES (AUTOMOTIVE)



**ENGINE AND EXHAUST GAS
FILTER CONNECTOR
(AUTOMOTIVE)**



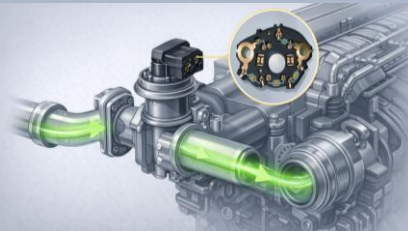
**HYBRID CAR CLUTCH
MODULE CONNECTOR
(AUTOMOTIVE)**



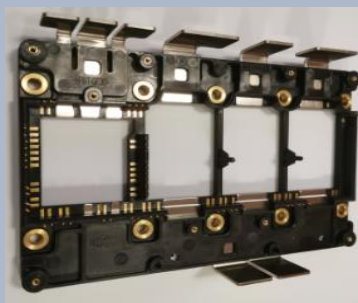
**POWER STEERING
CONNECTOR
(AUTOMOTIVE)**



**CONNECTOR FOR EGR
(EXHAUST GAS
RECIRCULATION) VALVE
ACTUATOR**



**CONNECTOR
FOR
ALTERNATOR**



**POWER MODULE
(AUTOMOTIVE)**



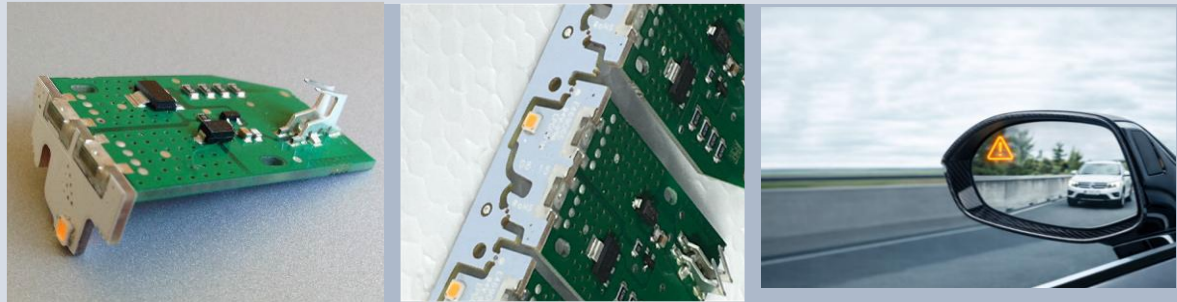
**RING TERMINALS
(AUTOMOTIVE)**



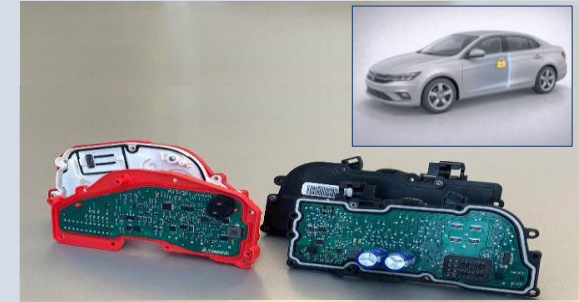
**LIGHTING PANEL
CONNECTORS
(AUTOMOTIVE)**



DESIGN AND
MANUFACTURE OF
COMPONENTS WITH A
QUALITY FIRST APPROACH,
BASED ON CUSTOMER
REQUIREMENTS



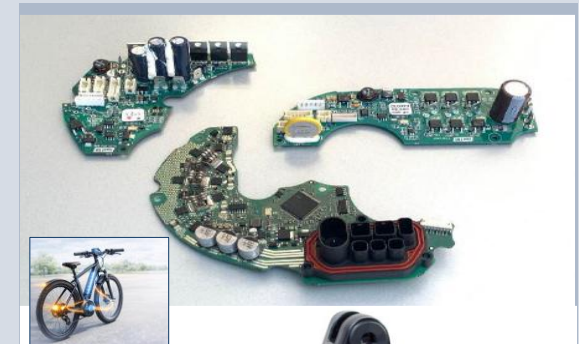
ELECTRONICS FOR SMALL LIGHTING DEVICES: TURN SIGNALS, SIDE MARKER WARNING LIGHTS, COURTESY LIGHTS, REFLECTORS (AUTOMOTIVE)



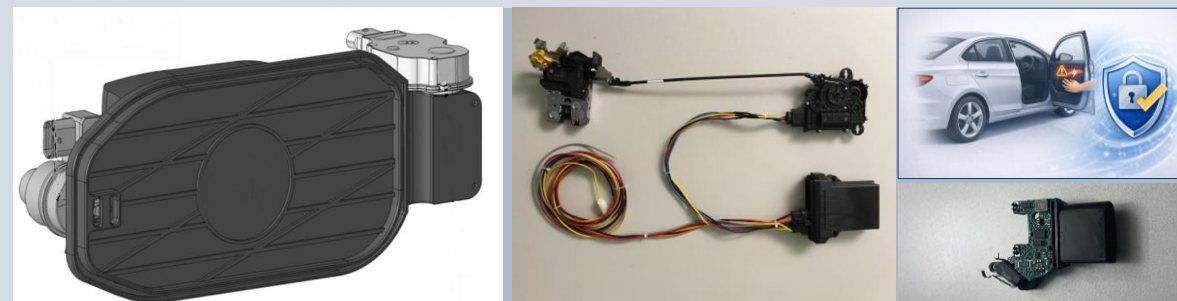
ELECTRONIC CONTROL UNITS FOR DOOR LOCKS (AUTOMOTIVE)



HOT BAR SOLDERING TECHNOLOGY FOR FPCB-PCBA CONNECTION IN LIGHTING MODULES (AUTOMOTIVE)



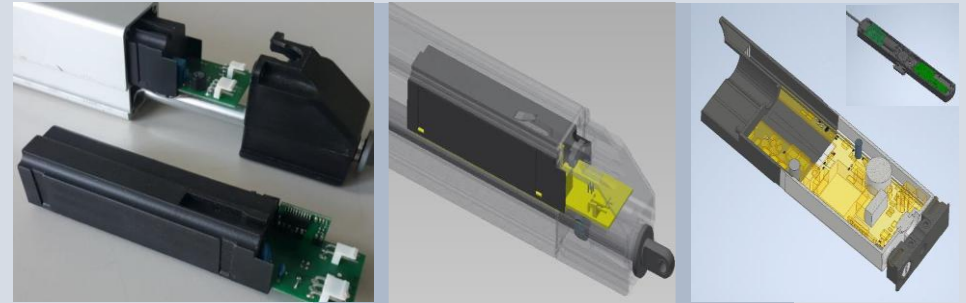
CONTROL UNITS FOR BLDC MOTOR CONTROL, WITH CUSTOM CONNECTORS FOR EASY PLUG-IN ASSEMBLY (EBIKE)



ECUs AND ACTUATORS FOR MOTORIZED CHARGING MODULES AND SOFT-CLOSING / ANTI-PINCH DOOR AND TAILGATE CLOSURE SYSTEMS, WITH CYBERSECURITY



**BACKLIT BUTTON FOR BATTERY CHARGING START
(AUTOMOTIVE)**



**MOTOR CONTROL FOR ACTUATORS; FULL PRODUCT RANGE - LOW VOLTAGE /
MAINS POWERED - WITH SWITCHING POWER SUPPLIES (HOME AUTOMATION)**



**RECHARGEABLE RF REMOTE CONTROLS
(HOME APPLIANCES)**



**ECU CONTROL UNIT FOR BRUSHLESS MOTOR CONTROL IN
CONDENSING BOILERS (HOME APPLIANCES)**



**CONTROL UNIT FOR HIU, WITH EUROPEAN
BENCHMARK PERFORMANCE - BESA
(THERMOREGULATION)**



**WATER, GAS, AND ENERGY METERS
(METERING)**



**REFRIGERATORS AND FREEZERS FOR SAFE VACCINE STORAGE,
POWERED DIRECTLY BY SOLAR PANELS (MEDICAL)**



**UI CONTROL UNITS
FOR PROFESSIONAL OVENS**



**KEYPADS FOR PROFESSIONAL COFFEE
MACHINES AND OTHER HO.RE.CA.
APPLICATIONS**

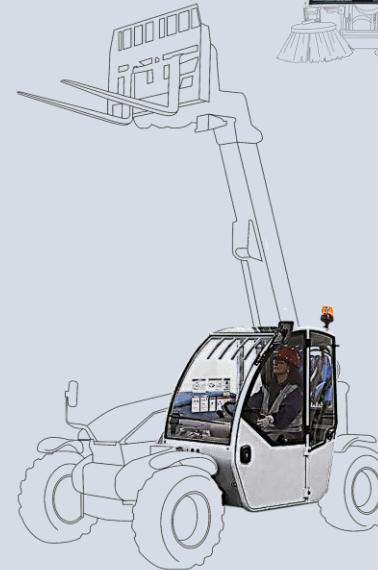
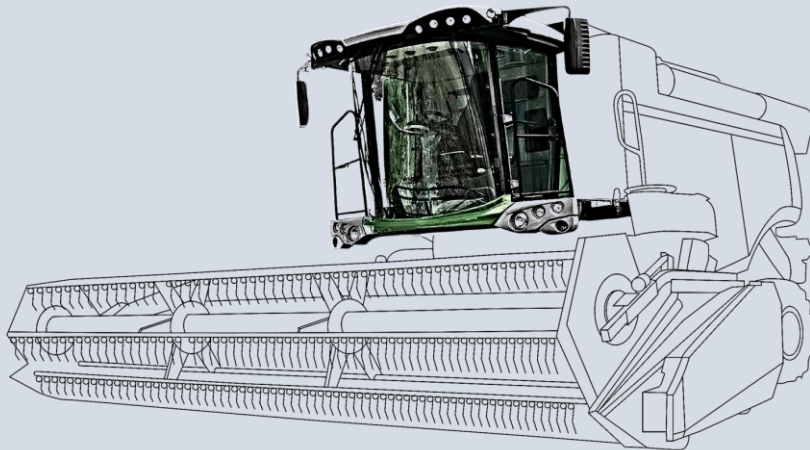
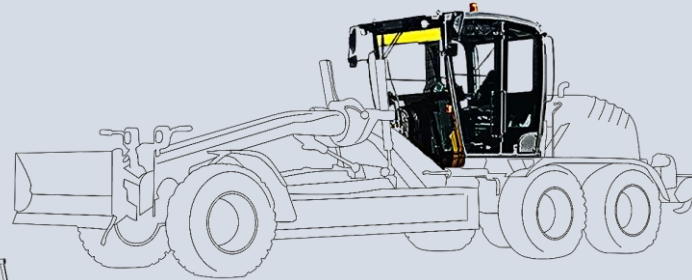
**HVAC/R
PRODUCTS**



**LOW, MEDIUM AND HIGH
VOLTAGE TRANSFORMERS**



**WIRELESS MODULES
AND IoT MODULES (NAVAL/SHIPPING)**



CABINS FOR OFF-HIGHWAY VEHICLES; SMART ELECTRIC VEHICLES

zetronic group

zetronic group

Zona Industriale Nona Strada, 29, 35129 Padova PD - ITALY

VAT N. IT00801060286

TEL. +39 049 791 2200

EMAIL: info@zetronic.it

www.zetronic.it

www.estrima.com

www.briedacabs.com

www.biroitaly.com

www.biroshare.com

www.valossa.it

www.decelettronica.com

www.innovatek-srl.it