



zetronic group

WE DRIVE YOUR EXPECTATIONS



zetronic group

**WE PROVIDE INDUSTRIAL DESIGN AND
MANUFACTURING SERVICES**

- Over 57,000 square meters of facilities
- Over 360 employees
- Over €85M in revenue

zetronic

**MECHATRONIC TECHNOLOGIES
AND COMPONENTS FOR
AUTOMOTIVE AND INDUSTRY**

- Since 1921
- Over 120 operators



**ELECTRONIC DESIGN &
MANUFACTURING SERVICES**

- Since 1986
- Over 40 operators



**ADVANCED MANUFACTURING
AND LABOR-INTENSIVE**

- Since 2023
- Over 80 operators



→ CABINS FOR AGRICULTURE AND INDUSTRY



→ ELECTRIC MOBILITY



→ SOLUTIONS FOR VEHICLE SHARING

- Since 1970
- Total over 115 operators

SETTORI & SPECIALIZZAZIONI

AUTOMOTIVE

PRODUCTS AND SOLUTIONS
ON-ROAD & OFF-HIGHWAY



INDUSTRIAL AUTOMATION



METERING & HVAC



SMALL & LARGE APPLIANCES



HOME AUTOMATION



MARKET

zetronic group

Zetronic Group adapts to customer needs, prioritizing quality, efficiency, and optimization: from certified product and line design to automated mass production, from the development of electronic solutions to advanced assembly activities.



INNOVATION



TECHNOLOGY



ANALYTICS



EFFICIENCY



PADOVA – 18.000 SQM – MECHATRONICS



PORTOGRUARO (VE) – 25.000 MQ – OFF-HIGHWAY & ELECTRIC



CHIARANO (TV) – 2.000 MQ – ELECTRONICS



LONGARONE (BL) – 12.000 MQ – LABOUR INTENSIVE



DIGITAL
TRANSFORMATION



PRODUCTIVITY



DIGITAL OPERATION



INTEGRATION

zetronic group

OUR FACILITIES AND OUR OPERATIONS ARE AT THE FOREFRONT

14 MACHINES FOR MOLD PRODUCTION

- Punching, molds, and inserts
- EDM erosion machines, milling machines, and grinding machines
- Ultrasonic cleaning
- Laser welding
- Grinding machines



25 PRESSES PLASTIC MOLDING

- VERTICAL AND HORIZONTAL PRESSES
- CAPACITY FROM 35T TO 350T
- Insert molding
- Automatic packaging
- In-line inspection



9 PRESSES METAL STAMPING

- CAPACITY FROM 25T TO 100T
- Automatic unwinding
- Mold production
- Copper alloy processing
- In-line camera inspection



zetronic group

OUR FACILITIES AND OUR OPERATIONS ARE AT THE FOREFRONT

2 GALVANIC LINES

- NICKEL, SILVER, TIN, TINNING, NICKEL PHOSPHORUS
- Automatic unwinding
- Full or selective coating
- Reel-to-reel plating lines
- Automatic rewinding
- In-line inspection



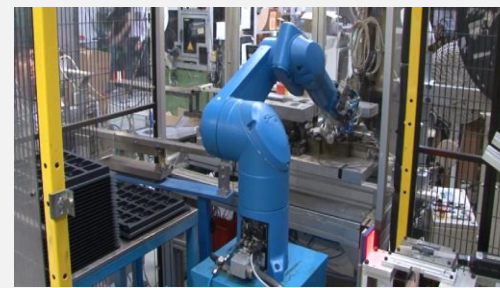
4 SMD PRODUCTION LINES

- Coating & Resins Department
- IPC-A-610 quality standards: AOI and X-ray quality checks
- Batch traceability
- Automated vertical storage system



ASSEMBLY AND AUTOMATED LINES

- Automatic and semi-automatic machines
- Automatic pin insertion
- Automatic camera inspection
- Robotic application
- Ultrasonic welding
- SMT process capability



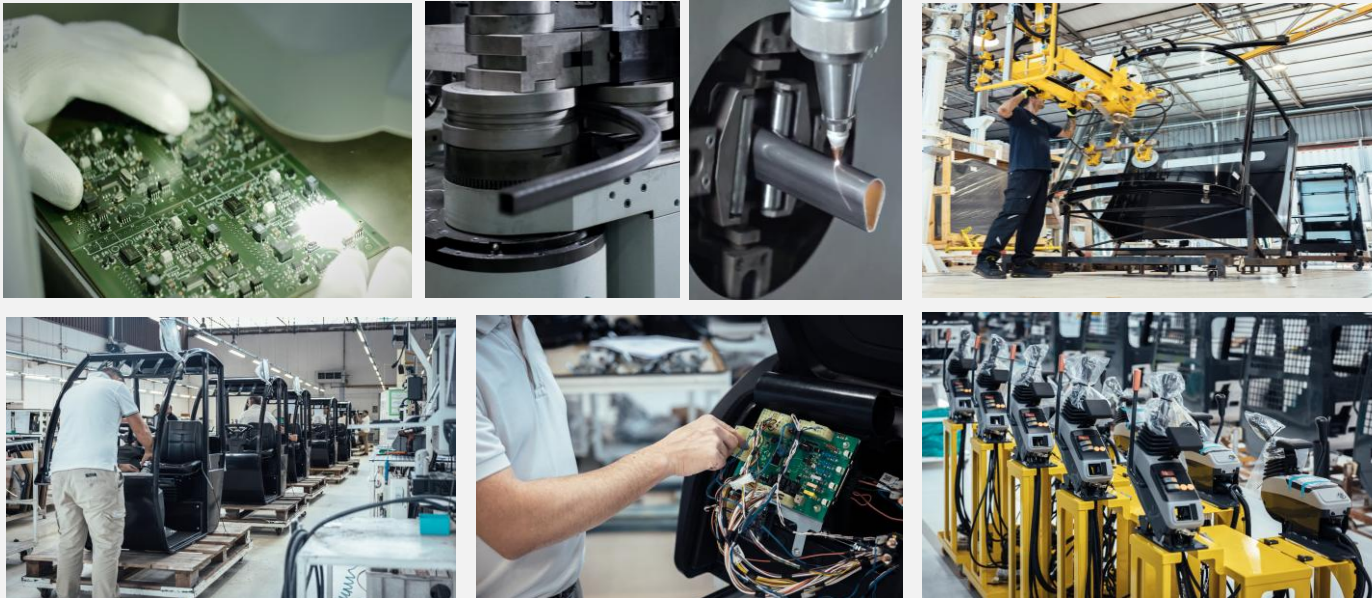
QUALITY TECHNOLOGIES, BY HISTORY AND VOCATION

We provide **total quality solutions**, working through every phase — from design to the final product — with constant commitment to **excellence, adherence to international standards**, and adaptation to the **specific needs of our customers**.

RELIABILITY LABORATORIES: electrical, environmental, mechanical tests

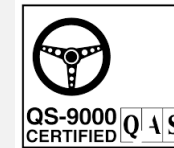


CERTIFIED PROCESSES: from the mechatronic component to the fully assembled vehicle on the line



THE CUSTOMER, THEIR REQUESTS, OUR SOLUTIONS

FINAL GOAL: ZERO DEFECTS



(1998)



(1993)



(2018)



(2006)



(2012)



(2013)

bsi.



(2019)



Zetronic uses only electricity from renewable sources, thanks to a 700 kWp photovoltaic system and the purchase of green energy.

zetronic group

To consolidate our long-standing production in **key markets and **key sectors** (mechanics, electronics, plastics), becoming the reference partner for major international groups by offering solutions through **a complete supply chain supporting industrial players.****

We aim to grow while maintaining a focus on industrialization and research & development (R&D), simultaneously integrating the services offered by the other companies in the group.

Services offered

- Design
- Industrialization
- Production
- After-sales

Operational approach

- OEM (Original Equipment Manufacturer)
- ODM (Original Design Manufacturer)
- CM (Contract Manufacturer)

KEYWORDS



Human capital, organization, trust, safety



Intellectual capital and technologies



Control and planning



Direct relationship with the client, in line with their needs



Control and management of financial and physical capital



Green-oriented approach

OUR AIM
IS TO ASSIST
CUSTOMERS
IN GROWING
AND
EXPANDING
THEIR BUSINESS
ON A GLOBAL
SCALE



AUTOMOTIVE
PRODUCTS AND SOLUTIONS
ON-ROAD & OFF-HIGHWAY



**INDUSTRIAL
AUTOMATION**



**METERING &
HVAC**



**SMALL & LARGE
APPLIANCES**

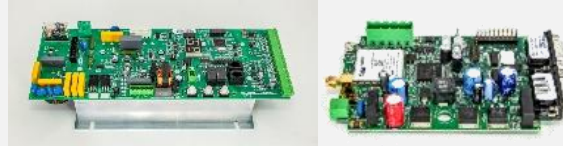


**HOME
AUTOMATION**

APPLICATION SECTORS AND PRODUCT EXAMPLES



AUTOMOTIVE



INDUSTRIAL AUTOMATION



WEARABLES



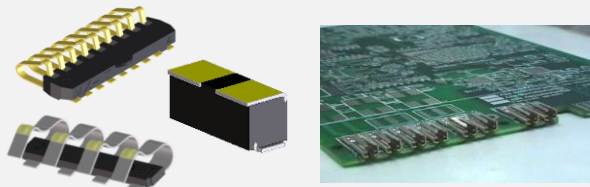
NAVAL & SHIPBUILDING



WIRELESS COMMUNICATION & IoT



HVAC/R



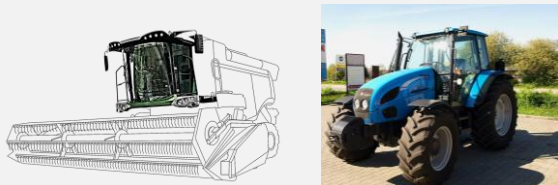
CONSUMER & TELECOM



HO.RE.CA. & FOOD



METERING



AGRICULTURE

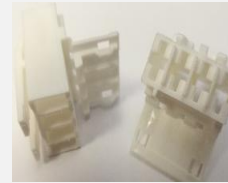
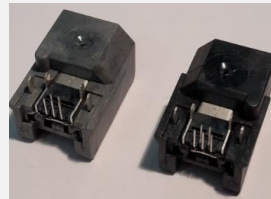
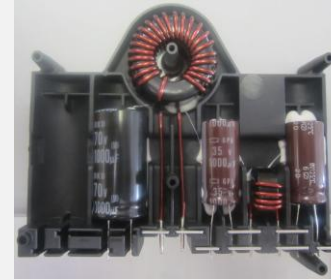


MOBILITY

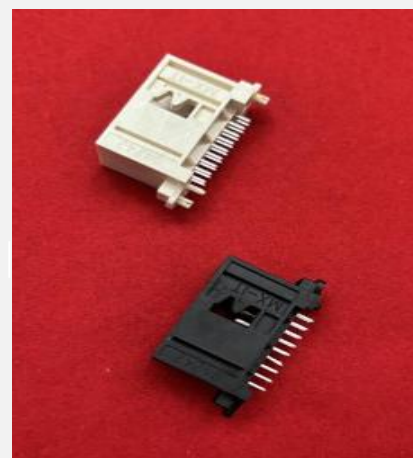


CONSTRUCTION SITES

- Power modules
- Leadframes
- Capacitor supports
- Wire-solderable coated surfaces
- Overmolded stator cage
- Insert-molded connectors
- Assembled battery connectors
- Connectors with press-fit pins
- MOX and RAST industrial interfaces
- Through-hole, pin-in-paste, SMT, PCB-mount terminations
- RAST female housings (sockets)
- Ring terminals

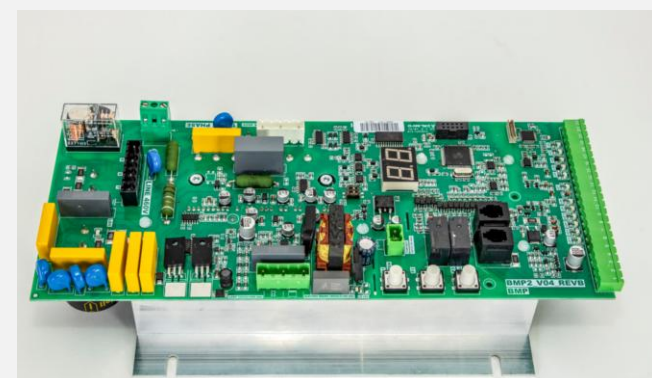
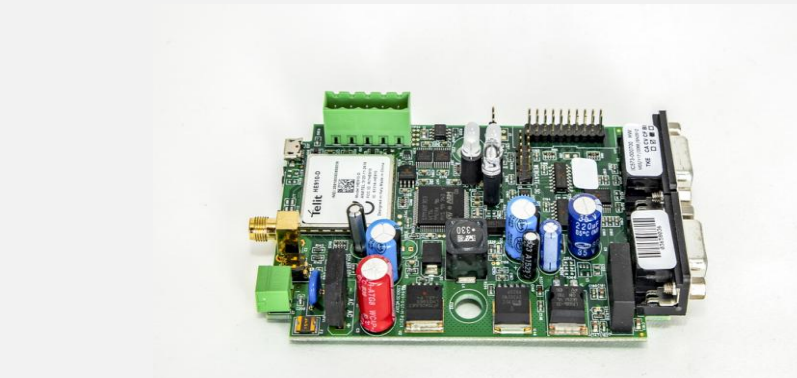
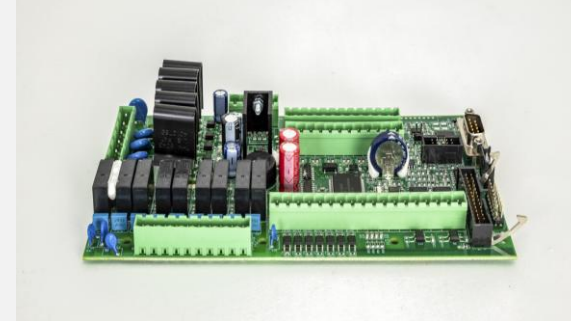


- Gesture control for sunroof module
- Clutch actuator
- Window lift system
- Internal injectors
- Tire pressure monitoring
- Engine control unit
- Dashboard control panel
- Vehicle control unit
- Insert-molded connector
- R/A plug-in headers
- Overmolded lead frames
- Gearboxes with electronic components
- MOX, CMC, USB interfaces
- VBS terminals



ELECTRONIC BOARDS

The electronic boards we produce are used in complete products, developed through engineering/co-engineering or manufactured according to customer specifications

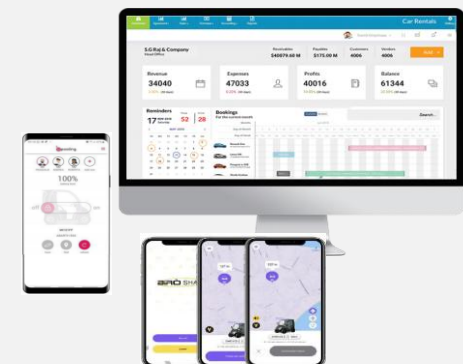
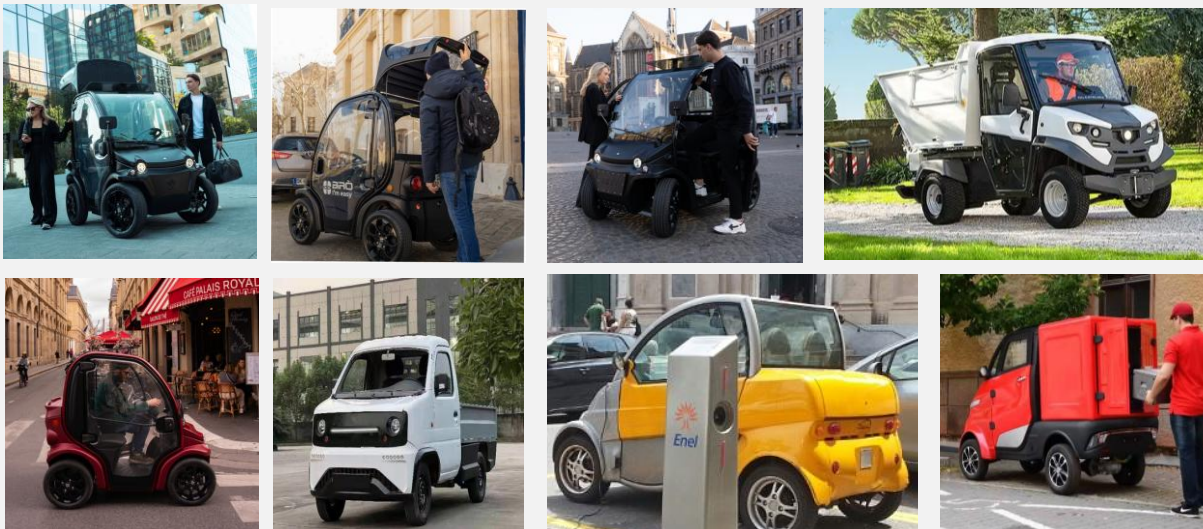


-
- The image displays a variety of smart home products. At the top left is a smartphone showing a control app with icons for different rooms and a 'MANUALE' button. Below the phone are several smart switches and dimmers, some with LCD screens and others with physical buttons. In the center and bottom are numerous green PCBs, some featuring relays, sensors, and other electronic components. To the right is a small black relay module and a white relay module. At the bottom right is a white smart plug and a white smart meter. The components are arranged on a white background.



BIRÒ is the smallest four-wheeled electric vehicle designed for urban mobility.

The experience we have gained in the sector allows us to offer customers **customized design and manufacturing services for electric vehicles**, with innovative solutions for urban logistics and shared mobility, always driven by innovation and sustainability.



SHARBIE is our
software solution for Vehicle
Sharing management

zetronic group

zetronic srl

Zona Industriale Nona Strada, 29, 35129 Padova PD

VAT N. 00801060286

TEL. +39 049 791 2200

EMAIL: info@zetronic.it

www.zetronic.it

www.estrima.com

www.biroitaly.com

www.briedacabs.com

www.decelettronica.com