



zetronic group

AUTOMOTIVE PRESENTATION

thanks to **molex**

Zetronic, founded in 1921, has established itself as a key player in the automotive sector, standing out in the production of custom components.

Historically active also in the telecommunications field, the company has developed solid expertise in the **integration of plastics, mechanics, and electronics**.

With **a team of over 120 employees** and a **turnover exceeding €25 million**, **Zetronic** represents industrial excellence in its sector, **specializing in tailor-made products** designed to meet the specific needs of its clients.

Following the acquisition by the **Fulchir family and iVision Tech SpA**, **a new era of growth and innovation begins**.



PADOVA - 18.000 SQM

zetronic

SINCE 1921, TECHNOLOGIES AND MECHATRONIC COMPONENTS FOR AUTOMOTIVE AND INDUSTRY

WWW.ZETRONIC.IT

zetronic
born in
1921

FIAT WAS AMONG THE CUSTOMERS AND ABSORBED ALMOST THREE QUARTERS OF THE PRODUCTION (STAPLES FOR MOLDINGS)

molex
ACQUIRES
ZETRONIC

MOLEX COMPLETES THE ACQUISITION OF ZETRONIC, INTRODUCING TELECOM CONNECTORS

REBRANDED TO ALIGN ITS NAME WITH ALL OTHER MOLEX FACILITIES WORLDWIDE

OPERATES WITHIN THE AUTOMOTIVE DIVISION, SPECIALIZING IN CUSTOM PARTS FOR AUTOMOTIVE, INDUSTRIAL, WHITE GOODS, AND MEDICAL APPLICATIONS

ZETRONIC ACQUIRES **ESTIMA** AND EXPANDS INTO OFF-HIGHWAY AND ELECTRIC AUTOMOTIVE SECTORS


ELECTRONIC
INTEGRATION

IVISION
TECH
& FULCHIR
FAMILY
ACQUIRE
ZETRONIC

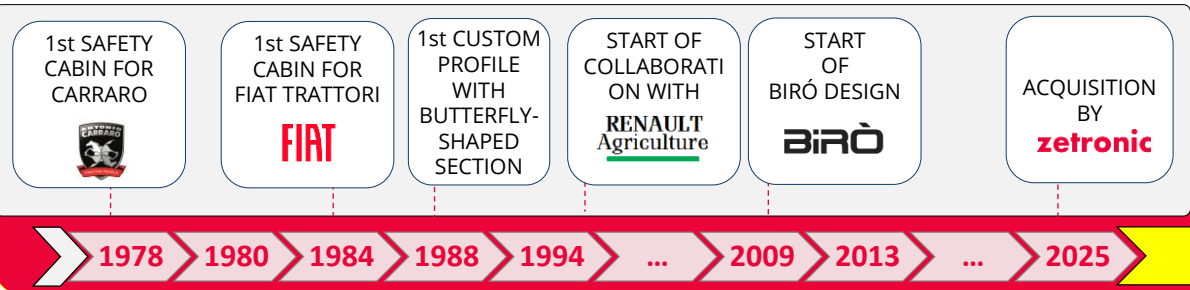
1921 ... 1949 ... 1986 1996 2007 2022 2024 2025

ESTRIMA is the company listed on **Euronext Growth Milan** through which **Zetronic** expands its presence in the Off-Highway and electric Automotive sectors.

ESTRIMA, with **over 120 employees** and a **turnover exceeding €35 million**, includes:

- **BRIEDA**, which designs and manufactures cabins for agricultural machinery, earthmoving equipment, industrial and electric vehicles, ensuring top-level customization, safety, and ergonomics.
- **BIRÓ**, the smallest four-wheeled electric vehicle, designed and manufactured by Estrima for urban mobility.
- **SHARBIE**, our software solution for *Vehicle Sharing* management, designed to optimize the use of BIRÓ and any fleet of vehicles.

ESTRIMA's companies have been operating in the market for decades: from concept and design to development and large-scale production, the entire process chain is focused and optimized to create products that meet the highest quality standards.



PORDENONE – 25.000 SQM

ESTRIMA

WWW.ESTRIMA.COM

BORSA ITALIANA
proudly listed in the Euronext Growth Milan - Ticker: BIRÓ

COMPANIES AND DIVISIONS OF ESTRIMA

FOR OVER 50 YEARS, CABINS FOR AGRICULTURE AND INDUSTRY

BRIEDA designs and manufactures **cabins** for agricultural and industrial machines: top-level customization, safety, and ergonomics.

WWW.BRIEDACABS.COM

COMPACT AND SUSTAINABLE ELECTRIC MOBILITY

ESTRIMA designs and manufactures **BIRÓ**, the smallest four-wheeled electric vehicle, designed for urban mobility.

WWW.BIROITALY.COM

DEC ELETTRONICA, founded in 1986, specializes in **Electronic Design & Manufacturing Services**.

It stands out in the market for its competitiveness and versatility: from design to production and testing, it oversees the entire value chain of the electronics sector.

Its entry into the **Zetronic Group** has enabled market expansion and new opportunities in electronics, leading to the implementation of complete mechatronic products.

With **over 40 people** and a **turnover exceeding €5 million**, **DEC ELETTRONICA** operates across multiple sectors: **automotive, industrial, industrial automation, food industry automation, HVAC** (heating, ventilation, and air conditioning), **medical, and metering**. All products and solutions are designed according to the specific needs of each customer.

- DEC ELETTRONICA has been on the market **for over 30 years**.
- DEC ELETTRONICA has successfully served **more than 50 clients**.
- DEC ELETTRONICA has produced **over 1 million electronic boards in the past 5 years**.



CHIARANO (TV) – 2.000 SQM



ELECTRONIC DESIGN &
MANUFACTURING SERVICES

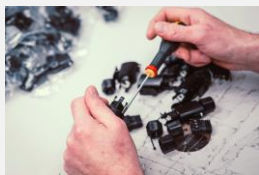
WWW.DECELETRONICA.COM

Innovatek is a **platform of excellence in industrial services** within the **advanced manufacturing sector**.

With **over 80 highly specialized professionals** and **more than €20 million in revenue**, **Innovatek** offers a comprehensive range of **services, solutions, and products** in the field of **mechatronics**.

Innovatek stands out for its expertise, flexibility, quality, and competitive pricing, adopting a fully customer-oriented approach — from design to production and equipment testing.

- Climate-controlled spaces with **dedicated lines** for clients
- **Investment capacity** in terms of facilities, specific technologies, and dedicated training
- **Functional testing** with dedicated testing stations
- **In-circuit testing** of electronic equipment in compliance with IPC-A-610 standards



LONGARONE (BL) – 12.000 SQM



LABOUR-INTENSIVE ACTIVITIES
IN THE FIELDS OF
MECHATRONICS,
ELECTRONICS, AND
MECHANICS

ZETRONIC GROUP

Zetronic Group, with its **57,000 square meters** of facilities, **over 360 people**, and a total **turnover exceeding €85 million**, offers industrial design and manufacturing services in the mechatronics sector.

Zetronic Group adapts to customer needs by prioritizing quality, efficiency, and optimization: from certified product and line design to automated mass production, from the development of electronic solutions to advanced assembly operations.

Thanks to the combination of automation and flexibility, **Zetronic Group** positions itself as a strategic solutions provider for major global players.

zetronic group



over 360 EMPLOYEES



TURNOVER: over €85M



AUTOMOTIVE, ON-ROAD & OFF-HIGHWAY PRODUCTS AND SOLUTIONS, INDUSTRIAL AUTOMATION, FOOD INDUSTRY, HVAC, MEDICAL, METERING

WE OFFER



ON-ROAD

AND



OFF-HIGHWAY

HI-TECH PRODUCTS & SOLUTIONS



PADOVA – 18.000 SQM – MECHATRONICS



PORTOGRUARO (VE) – 25.000 MQ – OFF-HIGHWAY & ELECTRIC



CHIARANO (TV) – 2.000 MQ – ELECTRONICS






LONGARONE (BL) – 12.000 SQM – LABOUR INTENSIVE

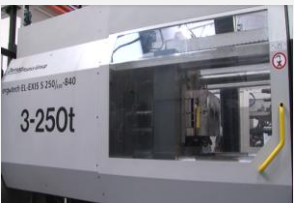
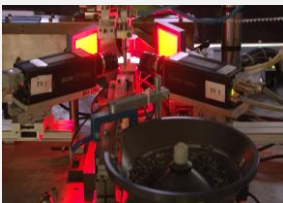
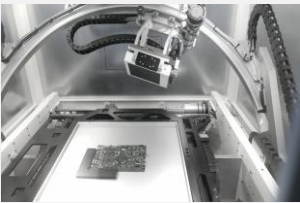
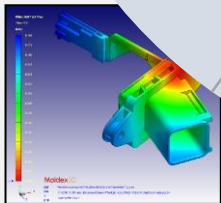
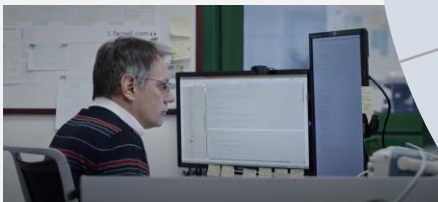
FROM DESIGN TO FINISHED PRODUCT

Our approach is **CUSTOMER-CENTRIC**, providing a complete service from design to mass production, under the strict quality standards required by the Automotive sector.

We transform needs into concrete solutions: thanks to our multidisciplinary team, we combine **engineering creativity, advanced design expertise**, and a **strong focus on customization to create, develop, and manufacture** unique components, systems, and production lines, built around the customer and their specific requirements.

TEAM R&D e PROGETTAZIONE

-  **25** mechanical and plastics designers
-  **20** electronics designers
-  **4** process engineers



zetronic

CONSOLIDATE, CONFIRM, PROGRESS IN AUTOMOTIVE SECTOR



Seat belt pretensioner
ECU electronic emission
Gestor control roof module
Engine control module
Dual clutch actuator
Battery/Electronic connectors

... and many others

zetronic group

MECHATRONICS

- MECHANICS -
- PLASTICS -
- ELECTRONICS -

Access through **molex** to
framework supply agreements for
plastics, metals, and electronics.

DEC
elettronica



target markets

AUTOMOTIVE,
INDUSTRY, FOOD INDUSTRY
AUTOMATION, HVAC,
MEDICAL, METERING

Brieda



target markets

AGRICULTURE
CONSTRUCTION
FREIGHT TRANSPORT
PUBLIC SERVICES



ESTRIMA



ALTRE
APPLICAZIONI:



target markets

CUSTOM VEHICLES FOR
PERSONAL AND SERVICE
MOBILITY, URBAN AND
MUNICIPAL GOODS TRANSPORT,
LAST MILE, POSTAL SERVICES

POSSIBLE NEW SYNERGIES

Expertise and certified experience in the electronics field open up
potential new development and integration opportunities.

APPLICATION SECTORS AND PRODUCT EXAMPLES



AUTOMOTIVE



INDUSTRIAL AUTOMATION



WERABLES



NAVAL & SHIPBUILDING



WIRELESS COMMUNICATION & IoT



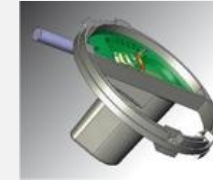
HVAC/R



CONSUMER & TELECOM



HO.RE.CA. & FOOD



METERING



AGRICULTURE



MOBILITY



CONSTRUCTION SITES

GOALS & CERTIFICATIONS

To **consolidate our long-standing production in the automotive sector** (mechanics, plastics sector) and become the reference partner for major international groups, offering "third-party" solutions through a **complete supply chain that supports industrial players**.

We aim to grow in the automotive sector with a strong focus on industrialization and research & development (R&D), while also integrating the services offered by other companies within the group in the **electronics sector**.

Services offered

- Design
- Industrialization
- Production
- After-sales

Operational approach

- OEM (Original Equipment Manufacturer)
- ODM (Original Design Manufacturer)
- CM (Contract Manufacturer)

KEYWORDS



Human capital, organization, trust, safety



Intellectual capital and technologies



Control and planning



Direct relationship with the client, in line with their needs



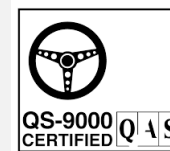
Control and management of financial and physical capital



Green-oriented approach

zetronic

FINAL GOAL:
ZERO DEFECTS



(1998)



(1993)



(2018)



(2006)



(2012)



(2013)

bsi.

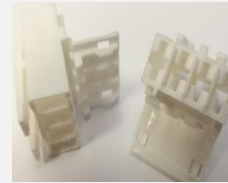
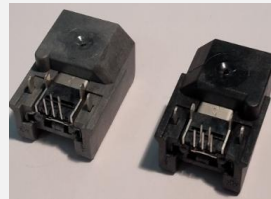
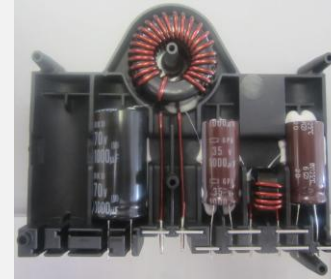


(2019)

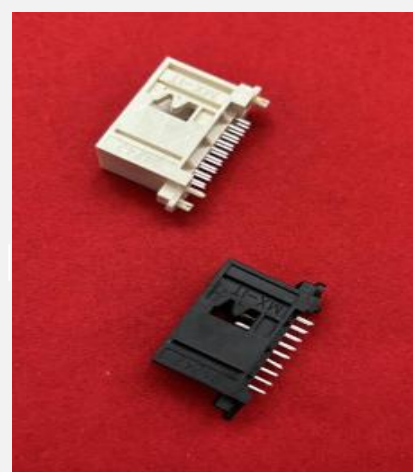


Zetronic uses only electricity from renewable sources, thanks to a 700 kWp photovoltaic system and the purchase of green energy.

- Power modules
- Leadframes
- Capacitor supports
- Wire-solderable coated surfaces
- Overmolded stator cage
- Insert-molded connectors
- Assembled battery connectors
- Connectors with press-fit pins
- MOX and RAST industrial interfaces
- Through-hole, pin-in-paste, SMT, PCB-mount terminations
- RAST female housings (sockets)
- Ring terminals

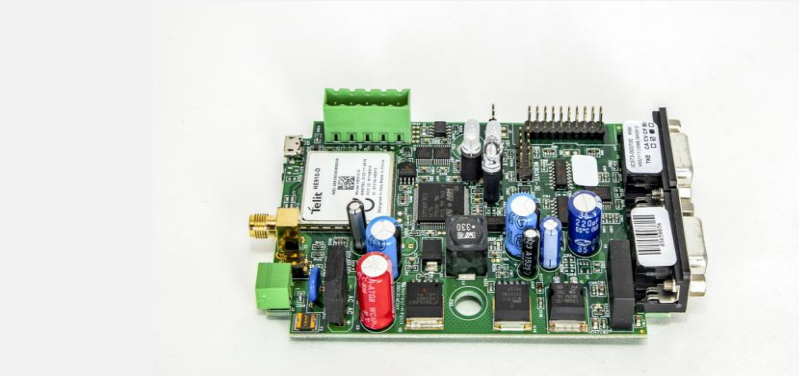
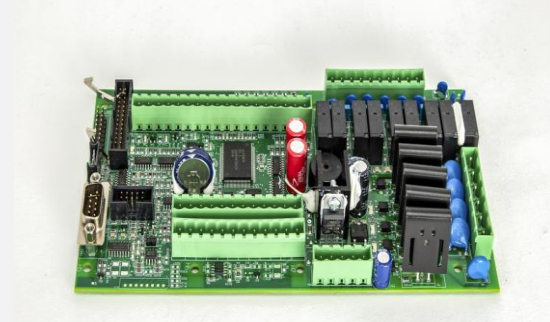
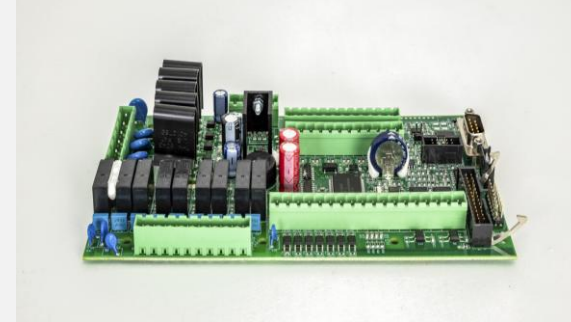
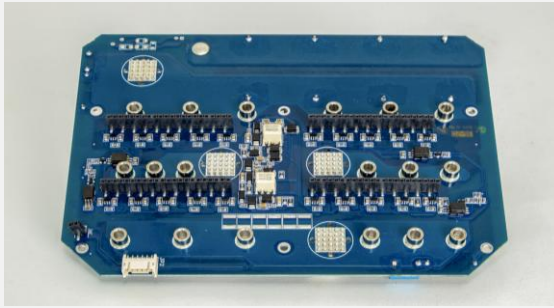


- Gesture control for sunroof module
- Clutch actuator
- Window lift system
- Internal injectors
- Tire pressure monitoring
- Engine control unit
- Dashboard control panel
- Vehicle control unit
- Insert-molded connector
- R/A plug-in headers
- Overmolded lead frames
- Gearboxes with electronic components
- MOX, CMC, USB interfaces
- VBS terminals



ELECTRONIC BOARDS

The electronic boards we produce are used in complete products, developed through engineering/co-engineering or manufactured according to customer specifications



- Touch interfaces
- Interactive panels
- Display interface
- Basic control units
- Relay expansions
- Three-phase controllers
- Radio controls
- CT interfaces
- Parametric control units
- Sensors
- Thermostats
- Z-WAVE modules
- Dataloggers





zetronic group

zetronic srl

Zona Industriale Nona Strada, 29, 35129 Padova PD - ITALY

VAT N. IT00801060286

TEL. +39 049 791 2200

EMAIL: info@zetronic.it

www.zetronic.it

www.estrima.com

www.biroitaly.com

www.briedacabs.com

www.decelettronica.com